

INTELLIGENTVISION PRESENTS

BEAUTY & THE BEAST PRO



CARTRIDGE INSTRUCTIONS (FOR 1 PLAYER)

BEAUTY AND THE BEAST PRO

Welcome to Lambville Falls, on a typical city if not for that Horrible Hank. He is as mean as they come. He eats bricks and spits fire, and now he has taken off with Buford's true love, Mabel. Buford may not be as tough as Hank, but he makes up for it with spunk and courage. Hank has climbed to the top of the old Mutton Building, and Buford must take charge and get his girl back!

MAKE SURE

- MASTER COMPONENT is connected to the TV SET and power cord is plugged in.
- ANTENNA SWITCH BOX is set to GAME.
- TV SET is plugged in and properly adjusted.
- **BEAUTY AND THE BEAST PRO** cartridge is placed firmly in the cartridge slot.
- ON/OFF SWITCH is turned ON.

PRESS RESET BUTTON

Title will appear on the TV screen



EXAMINE YOUR CONTROLS

Keypad:

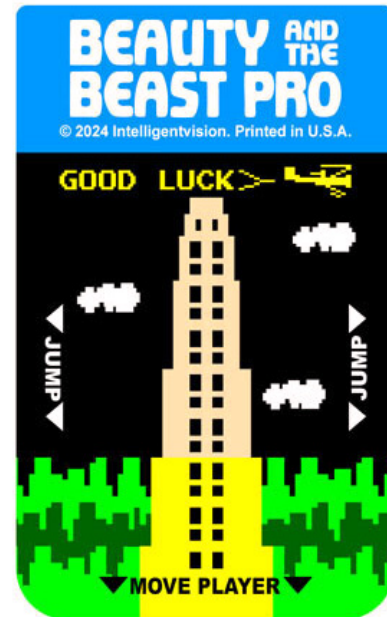
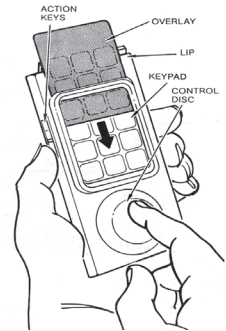
- 1, 2, or 3 to Select Level at Title Screen
- 1 + 9 to Pause

Action Keys:

- Jump

Control Disc:

- Move Buford



GAME CHANGES / ENHANCEMENTS

- Better control while moving up the building.
- Buford moves slower.
- Invincibility added after falling.
- Invincibility timing has been improved.
- More hearts have been added.
- Difficulty can be selected at the title screen.
- The sky changes color from day to night as the game progresses.
- Mabel's image has been improved.
- More clouds appear, and they move between floors.

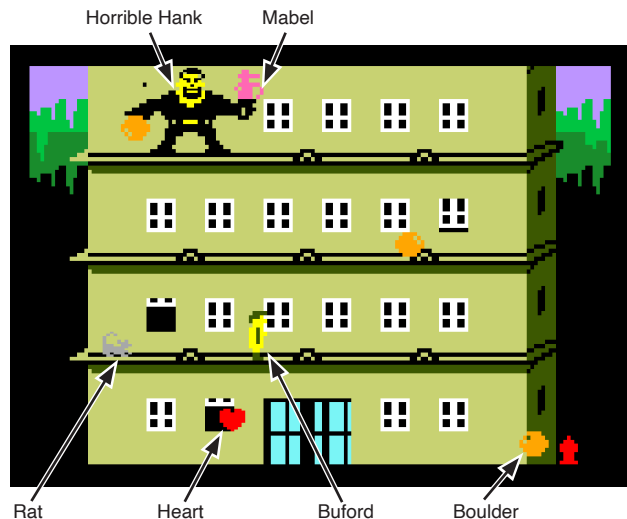
OBJECT OF THE GAME

Get the highest number of points possible by climbing each section of the building through open windows. Dodge the relentless boulders, bats, birds, and rats while trying to catch a heart that Mabel has thrown down to you. Enjoy the climb as the day turns to night!

SELECTING DIFFICULTY

When you see the *Beauty and the Beast Pro* title screen, you can use the keypad to select what level (building) you'd like to start on. Level 1 is the easiest, level 2 is harder, and level 3 is the hardest.

If you do not select a level, you will begin on Level 1.



GAME PLAY

Move Buford left, right, up, or down using the Control Disc. Dodge the boulders as they come down. In later levels they break apart. Press the jump button and time your moves to dodge the rats, bats, and birds. Catch a heart to become invincible for a short time.

If Buford falls, he loses a chance but will be invincible for a short time when he reappears.

Also, watch out and do not get too close to the edge of the building or he'll fall to the very bottom!

Please reference the original Beauty and the Beast instruction manual for more details on how to play.



Chances Remaining

Floors Climbed


Building / Level

When Buford succeeds in climbing the section of floors he's scaling, the screen changes to an overall view of the Mutton Building.

The building is tinted to show how high Buford has climbed. The building number and number of floors climbed appears in the lower-right of the screen.

Your score appears in the upper-right of the screen.


The sky will change color to indicate the passage of time during the game.



 The little blue characters in the lower-left show how many chances Buford has remaining.

A biplane buzzes by and tells you how you and Buford are doing.

When Buford reaches the top of the building, it will be completely yellow. Don't stop now! See how many buildings you can help Buford climb. The more buildings he climbs, the tougher the going gets.

SCORING

Catch a Heart: 50 points 

Squash a Boulder, Bat, Rat, or Bird: 50 points  

Reach the Top: 100 points 

Defeat Hank: 500 points

Buford begins with 3 chances and has the ability to gain up to 6 chances by reaching the top. Buford will get 1 extra chance every other time he reaches Mabel and Hank for the first 5 buildings.

Starting with the sixth building, Buford will earn an extra chance every fourth time he reaches the top. Two bonus chances are possible per building.

GAME OVER

The game ends when Buford runs out of chances. Keep trying and see how many buildings you can complete!

TIPS

Don't let Buford linger under bumpers. A boulder may bash him. Bad news!

Hurry up! The longer Buford takes, the more obstacles he'll encounter.

Press 1+9 together to pause the game if you need a short break.

INTELLiGENTViSiON